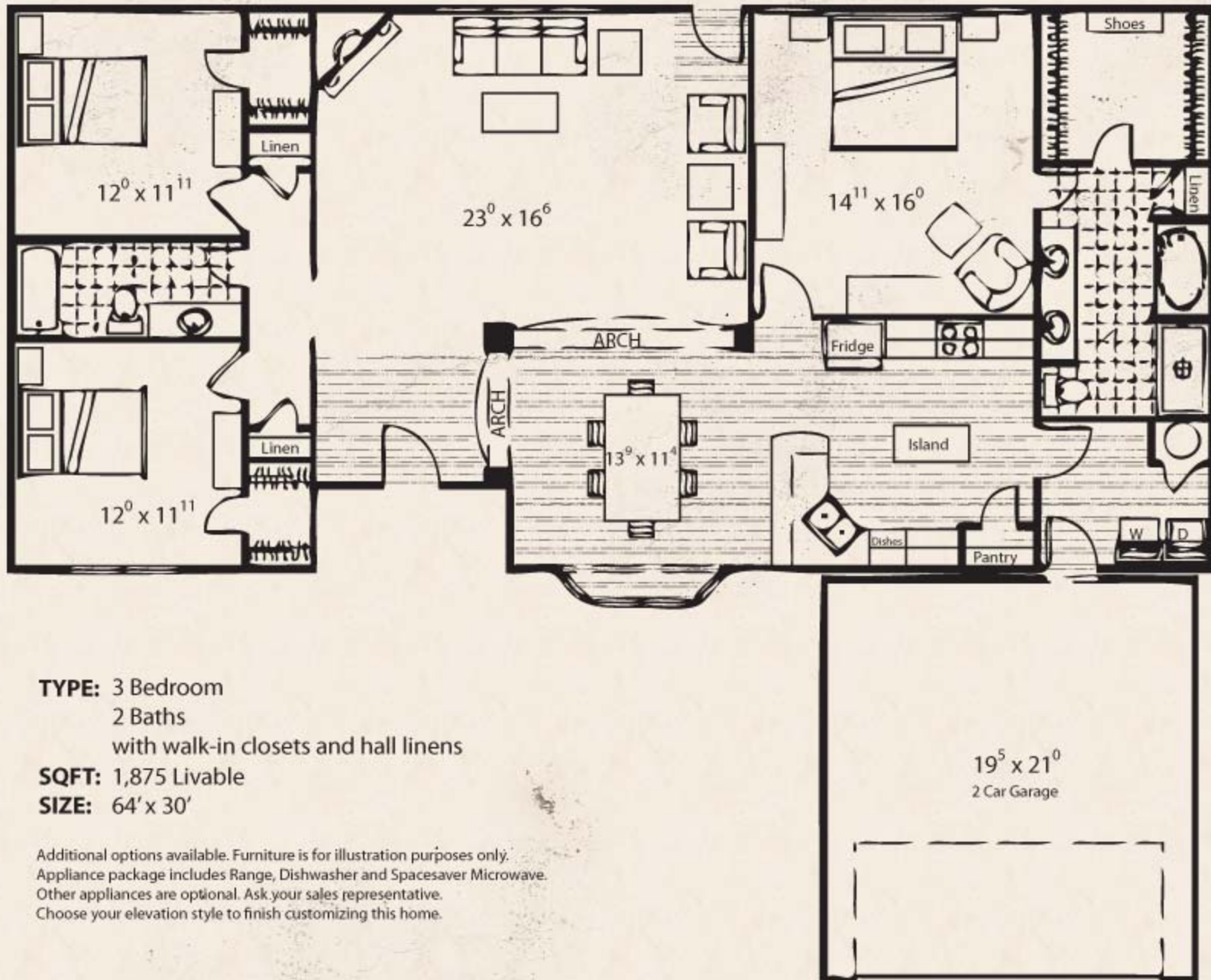


# The Ceville Series

LUBBOCK  REDI-BUILT  
HOMES



**TYPE:** 3 Bedroom  
2 Baths  
with walk-in closets and hall linens

**SQFT:** 1,875 Livable

**SIZE:** 64' x 30'

Additional options available. Furniture is for illustration purposes only.  
Appliance package includes Range, Dishwasher and Spacesaver Microwave.  
Other appliances are optional. Ask your sales representative.  
Choose your elevation style to finish customizing this home.